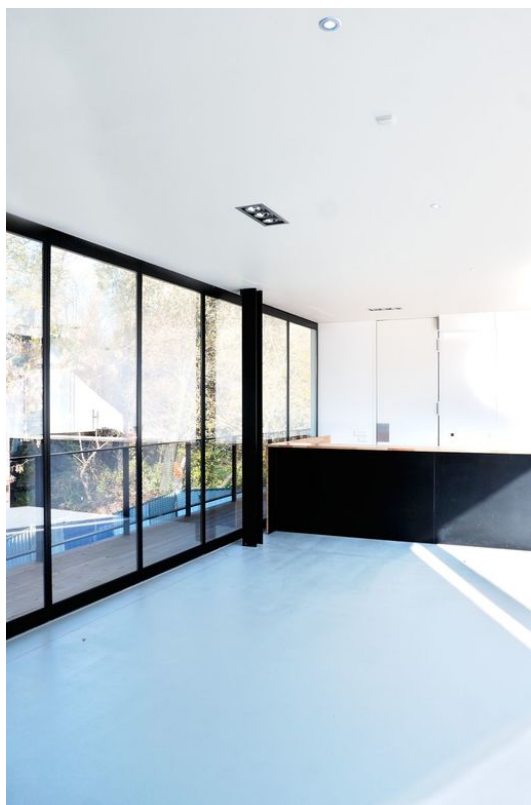


# Product data sheet

## **MSW double-action door – fine-framed \***



Closure element for movable fine-framed glass partitioning walls

### **AREAS OF APPLICATION**

- Internal and protected external area
- Position at the stacking area of the glass partitioning wall
- Can be used up to 3000 mm clear height
- Can be used up to 1500 mm element width

# MSW double-action door - fine-framed

\*

## PRODUCT FEATURES

- Horizontal and vertical profiles for glass framing
- Toughened safety glass ESG 10 mm flush on one side
- Insulating glass 22 mm centred applicable
- Element weight up to 125 kg
- Dry glazing by means of circumferential glazing gasket
- Can be combined with all other element types - fine-framed

## TECHNICAL DATA

Productname

MSW double-action door - fine-framed \*

\* The products designated above may vary in form, type, characteristics, function, or availability depending on the country. Please get in touch with your GEZE contact person if you have any questions.