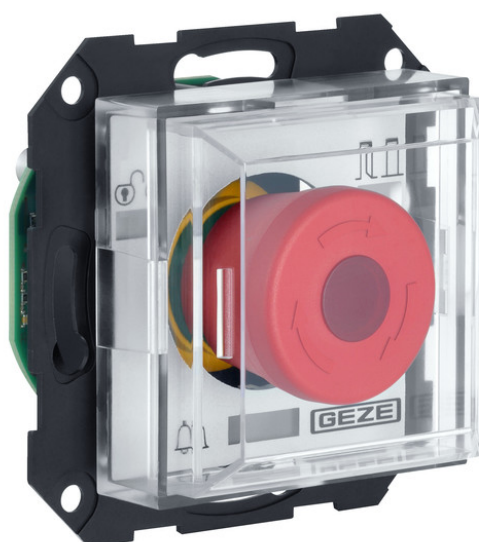


Product data sheet

T 320 UP control unit *



Slave control unit for bidirectional escape routes with a TZ 320 or TZ 322

AREAS OF APPLICATION

- Terminal functions as additional interface for a TZ 320 to trigger an indirect release of a bi-directional emergency exit
- Realisation of a bidirectional emergency exit
- Realisation of an escape balcony
- Designed for installation in 55-type flush-mounted ranges
- Can be mounted in flush-mounted sockets 62.5 mm deep

T 320 UP control unit ***PRODUCT FEATURES**

- Flat impact cover enables fast and safe activation of the illuminated emergency push button in panic situations
- Coloured connectors facilitate electrical connection

TECHNICAL DATA

Productname	T 320 UP control unit *
Type of installation	Flush-mounted installation
Service temperature	-10 - 50 °C
IP rating	IP30
Operating voltage	24 V DC
Power consumption	100 mA
Supply voltage	24 V DC
Sabotage contact	Yes
Emergency push button	Yes
Visual display	yes
Volume	75 db
With ribbon cable	Yes
Conforms to the EltVTR (guidelines for electronic locking systems)	Yes
Conforms to EN 13637	No

VARIANTS / ORDER INFO

Designation	Description	Ident-No.	Operating voltage	Type of installation
T 320 UP control unit *	(no complete flush-mounting set available. Made up of individual components) / Control unit with emergency push button / Impact cover made of transparent plastic / For switch programmes in System 55 / Installation in flush-mounted sockets 62.5 mm deep / Operating voltage: 24 V DC / Current consumption: 100 mA	140999	24 V DC	Flush-mounted installation

T 320 UP control unit *



ACCESSORIES

GIRA FRAME E2 *

Flush-mounted frame for the installation of flush-mounted components in GIRA E2 design



KEY SWITCH 220 UP *

Key switch for authorised activation and changing the mode of operation of automatic doors, flush-mounted



Designation	Description	Ident-No.	Colour	Type of installation
SCT 220 key switch, Jung ST 550 *	Two-sided switching operation, with Euro profile half cylinder and three keys / with 1-gang frame	094169	alpine white	Flush-mounted installation
SCT 220, GIRA E2 key switch	Two-sided switching operation, with Euro profile half cylinder and three keys	094171	pure white matt	Flush-mounted installation
SCT 220, Jung LS 990 key switch *	Two-sided switching operation, with Euro profile half cylinder and three keys / with Euro profile half cylinder 30/10 / with single frame / IP rating: IP20 / W x H x D: 81 x 81 x 62.5	094170	Stainless steel	Flush-mounted installation
SCT 220, GIRA E2 key switch *	Switch programme GIRA E2 / with Euro profile half cylinder 30/10 / with single frame / IP rating: IP20 / W x H x D: 81 x 81 x 62.5	094012	pure white matt	Flush-mounted installation
SCT 220, Jung LS 990 key switch *	Two-sided switching operation, with Euro profile half cylinder and three keys / with Euro profile half cylinder 30/10 / with single frame / IP rating: IP20 / W x H x D: 81 x 81 x 62.5	089345	Stainless steel	Flush-mounted installation

KEY SWITCH 320 UP *

Key switch for authorised activation and for changing the mode of operation of automatic doors, flush-mounted



Designation	Description	Ident-No.	Colour	Operating voltage	Type of installation
SCT 320 UP, key switch	Two-sided switching operation, with Euro profile half cylinder and three keys / with sabotage contact / with ribbon cable / Contact rating: 24 V DC, 1A / Area of application: dry rooms / Without frame	132278	anthracite	24 V DC	Flush-mounted installation
SCT 320 UP, key switch	Two-sided switching operation, with Euro profile half cylinder and three keys / with sabotage contact / with ribbon cable / Contact rating: 24 V DC, 1A / Area of application: dry rooms / Without frame	131984	alpine white	24 V DC	Flush-mounted installation

T 320 UP control unit *

Designation	Description	Ident-No.	Colour	Operating voltage	Type of installation
SCT 320 UP, key switch	Two-sided switching operation, with Euro profile half cylinder and three keys / with sabotage contact / with ribbon cable / Contact rating: 24 V DC, 1A / Area of application: dry rooms / Without frame	130370	pure white matt	24 V DC	Flush-mounted installation

DUMMY COVER WITH SUPPORTING RING, GIRA E2 *

Flush-mounted frame for the installation of flush-mounted components in GIRA E2 design



Designation	Ident-No.	Colour	Dimensions	Type of installation
Dummy cover with supporting ring, Gira E2 *	142492	anthracite	55 x 55 mm	Surface-mounted
Dummy cover with supporting ring, Gira E2 *	093997	pure white matt	55 x 55 mm	Surface-mounted

* The products designated above may vary in form, type, characteristics, function, or availability depending on the country. Please get in touch with your GEZE contact person if you have any questions.