

Product data sheet

TS 4000 Tandem



Overhead door closer with link arm for single leaf doors/gates
with a leaf width greater than 1600 mm

AREAS OF APPLICATION

- Fire and smoke protection doors
- Right and left single-action doors
- Single-action doors from 1600 mm leaf width and very high weight
- Door leaf installation hinge side and transom installation opposite hinge side
- Door leaf installation opposite hinge side in parallel arm installation possible

PRODUCT FEATURES

- System comprising two door closers TS 4000 EN5-7 and TS 4000 EN1-6
- Closing force with variable adjustment from EN7
- Can be used for right and left hand doors with conversion
- Mechanical latching action which accelerates the door shortly before the closed position
- Closing speed can be individually adjusted
- Integrated back check, slows down doors that are thrown open forcefully
- Visual closing force display for easy control of the setting

TECHNICAL DATA

Productname	TS 4000 Tandem
Closing force in accordance with EN 1154	EN > 7
Type of installation	Door leaf installation hinge side, Door leaf installation opposite hinge side, Transom installation opposite hinge side
Opening angle (max.)	180 °
Suitability for fire protection doors	Yes
Closing force adjustable	Yes, stepless
Adjustable closing speed	Yes
Latching action adjustable	Yes, via link arm
Back check integrated	Yes, hydraulically adjustable
Position of closing force adjustment	Front
Visual closing force display	Yes
Hold-open function	Optional
Smoke switch integrated	No

PART

LINK ARM TS 4000 / 2000 ELONGATED

For transom installation with reveal depth between 70-170 mm



TS 4000 Tandem



Designation	Description	Ident-No.	Colour
Link arm TS 4000/2000 elongated	Extended, for transom installation with reveal depth between 70-170 mm	102434	according to RAL
Link arm TS 4000/2000 elongated	Extended, for transom installation with reveal depth between 70-170 mm	102431	silver-coloured
Link arm TS 4000/2000 elongated	Extended, for transom installation with reveal depth between 70-170 mm	102433	white RAL 9016

TS 4000 TANDEM COMPLETE PACKAGE

Overhead door closer with link arm larger than EN 7 with back check



Designation	Description	Ident-No.	Colour	Closing force in accordance with EN 1154	Dimensions
GEZE TS 4000 Tandem	Complete package, closing force > EN 7, for doors/gates with a leaf width greater than 1600 mm or a very high weight, with back check, with normal link arm	116186	according to RAL	EN > 7	287 x 51 x 130 mm
GEZE TS 4000 Tandem	Complete package, closing force > EN 7, for doors/gates with a leaf width greater than 1600 mm or a very high weight, with back check, with normal link arm	102841	silver-coloured	EN > 7	287 x 51 x 130 mm

INSTALLATION MATERIAL

SPINDLE EXTENSION

For TS 4000/TS 2001



Designation	Description	Ident-No.	Colour	Spindle extension
Spindle extension for TS 4000 / TS 2000	Crown gearing	103678	black	15 mm
Spindle extension for TS 4000 / TS 2000	Crown gearing	103550	Galvanised	20 mm
Spindle extension for TS 4000 / TS 2000	Crown gearing	103679	black	20 mm
Spindle extension for TS 4000 / TS 2000	Crown gearing	139793	according to RAL	15 mm
Spindle extension for TS 4000 / TS 2000	Crown gearing	103548	Galvanised	10 mm
Spindle extension for TS 4000 / TS 2000	Crown gearing	103677	black	10 mm
Spindle extension for TS 4000 / TS 2000	Crown gearing	103549	Galvanised	15 mm

TS 4000 Tandem



DRILLING TEMPLATE DOOR CLOSER

for TS 5000/TS 4000/TS 3000/TS 2000



Designation	Description	Ident-No.
Drilling template door closer	for TS 5000/TS 4000/TS 3000/TS 2000	053134

MOUNTING PLATE LINK ARM *

for TS 4000/TS 2000, with slim frames



Designation	Description	Ident-No.	Colour
Mounting plate link arm	for TS 4000/TS 2000, with slim frames	082506	according to RAL
Mounting plate link arm	for TS 4000/TS 2000, with slim frames	057109	silver-coloured

MOUNTING PLATE DOOR CLOSER

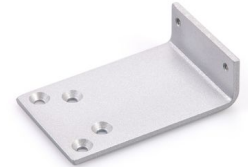
for TS 4000 Tandem with hole pattern according to DIN EN 1154 Supplement 1



Designation	Description	Ident-No.	Colour
Mounting plate	for TS 4000 Tandem with hole pattern according to DIN EN 1154 Supplement 1	116189	according to RAL
Mounting plate	for TS 4000 Tandem with hole pattern according to DIN EN 1154 Supplement 1	105119	silver-coloured

MOUNTING PLATE LINK ARM

For TS 4000/TS 2000 for parallel arm installation



Designation	Description	Ident-No.	Colour
Mounting plate link arm	for TS 4000/TS 2000, for parallel arm installation	053319	dark bronze
Mounting plate link arm	for TS 4000/TS 2000, for parallel arm installation	027460	according to RAL
Mounting plate link arm	for TS 4000/TS 2000, for parallel arm installation	053318	silver-coloured

* The products designated above may vary in form, type, characteristics, function, or availability depending on the country. Please get in touch with your GEZE contact person if you have any questions.