

Product data sheet

TS 4000 EFS



Overhead door closer with link arm for single leaf doors of up to 1400 mm leaf width with electric free swing function

AREAS OF APPLICATION

- Fire and smoke protection doors
- Right and left single-action doors
- Single-action doors up to 1400 mm leaf width
- Door leaf installation hinge side and transom installation opposite hinge side (different variants)
- Hold-open systems with integrated hold-open function with free swing
- Barrier-free access in accordance with DIN 18040

PRODUCT FEATURES

- Closing force EN1-6 with variable adjustment
- Operating voltage 24 V DC
- Can be used for right and left hand doors without conversion
- Free swing function makes it possible to pass through the door with little physical force required
- Free swing function once the door has been opened once to approx. 90°
- Smoke switch control unit can be connected, whose signal makes the door close automatically in the event of a fire
- Mechanical latching action which accelerates the door shortly before the closed position
- Closing speed can be individually adjusted
- Visual closing force display for easy control of the setting
- All functions can be set from the front (except for latching action)

TECHNICAL DATA

Productname	TS 4000 EFS
Closing force in accordance with EN 1154	EN 1 - 6
Barrier-free in accordance with DIN 18040 up to leaf width (max.) in mm	1400 mm
Leaf width (max.)	1400 mm
Type of installation	Door leaf installation hinge side, Transom installation opposite hinge side
Opening angle (max.)	180 °
Input voltage	24 V DC
Suitability for fire protection doors	Yes
Free swing area	80 ° - 175 °
Closing force adjustable	Yes, stepless
Adjustable closing speed	Yes
Latching action adjustable	Yes, via link arm
Position of closing force adjustment	Front
Visual closing force display	Yes
Hold-open function	Electrically, for free-swing function
Smoke switch integrated	No

TS 4000 EFS



PART

LINK ARM TS 4000 EFS / RFS

with free swing function / free swing



Designation	Description	Ident-No.	Colour
Link arm TS 4000 EFS/RFS	with free swing function / free swing	106462	according to RAL
Link arm TS 4000 EFS/RFS	with free swing function / free swing	106460	silver-coloured

CLOSER BODY TS 4000 EFS *

Overhead door closer with link arm EN 1-6 with electric free swing function



Designation	Description	Ident-No.	Colour	Closing force in accordance with EN 1154	Dimensions
GEZE TS 4000 EFS Closer *	Size EN 1-6, door leaf installation hinge side, with electric hold-open device for free swing function and connector box (without free swing link arm)	N/A	silver-coloured	EN 1 - 6	325 x 46 x 60 mm
GEZE TS 4000 EFS Closer *	Size EN 1-6, door leaf installation hinge side, with electric hold-open device for free swing function and connector box (without free swing link arm)	N/A	according to RAL	EN 1 - 6	325 x 46 x 60 mm

CLOSER BODY TS 4000 EFS KM BG *

Overhead door closer with link arm EN 1-6 with electric free swing function



Designation	Description	Ident-No.	Colour	Closing force in accordance with EN 1154	Dimensions
GEZE TS 4000 EFS KM BG door closer *	Size EN 1-6, transom installation opposite hinge side, with electric hold-open device for free swing function (without free swing link arm)	N/A	according to RAL	EN 1 - 6	325 x 46 x 60 mm
GEZE TS 4000 EFS KM BG door closer *	Size EN 1-6, transom installation opposite hinge side, with electric hold-open device for free swing function (without free swing link arm)	N/A	silver-coloured	EN 1 - 6	325 x 46 x 60 mm

ACCESSORIES**GC 152 ***

Smoke detector for GEZE hold-open systems



Designation	Description	Ident-No.	Colour	Supply voltage	Type of installation
GEZE smoke detector GC 152 *	Complete with base, 24 V DC, 20 mA, tested in accordance with EN54-7, with general approval for use with all GEZE hold-open systems FA GC 150, integrated line monitoring, conform with DIN EN 14637	139850	white RAL 9010	24 V DC	Ceiling

GC 153 *

Thermal detector for GEZE hold-open systems



Designation	Description	Ident-No.	Colour	Supply voltage	Type of installation
GEZE thermal detector GC 153 *	Complete with base, 24 V DC, 20 mA, tested in accordance with EN54-5, with general approval for use with all GEZE hold-open systems FA GC 150, integrated line monitoring, conform with DIN EN 14637	139881	white	24 V DC	Ceiling

AS 500

Manual trigger switch for the manual release of electrically controlled hold-open devices



Designation	Description	Ident-No.	Colour	Dimensions	Operating voltage
AS 500 manual trigger switch	for the manual release of electrically controlled hold-open devices including terminating resistor for line monitoring	116266	alpine white/red	80 x 80 x 9 mm	24 V DC
AS 500 manual trigger switch, glass	for the manual release of electrically controlled hold-open devices including terminating resistor for line monitoring, glass pane and 5 interchangeable labels	120880	alpine white/red	80 x 80 x 21 mm	24 V DC

GC 171 *

Wireless module for wireless connection of wireless components to GEZE hold-open systems



Designation	Description	Ident-No.	Colour	Supply voltage	Dimensions
GEZE GC 171 wireless module *	for the wireless connection of wireless components (GC 172 wireless smoke detector; GC 173 wireless thermal detector; GC 175 wireless input module) on GEZE hold-open systems.	163051	anthracite	24 V DC	177 x 30 x 18 mm

GC 175 *

Wireless input module for wireless connection of manual trigger switches to the GC 171 wireless module



Designation	Description	Ident-No.	Colour	Supply voltage	Dimensions
GEZE GC 175 wireless input module *	for the wireless connection of manual trigger switches to the GEZE GC 171 wireless module, applicable for all GEZE hold-open systems	163068	black	3 V DC	52 x 52 x 32 mm

WIRELESS KIT FA GC 170 *

Set comprising GC 171 wireless module and GC 172 wireless ceiling-mounted smoke detector



Designation	Description	Ident-No.
GEZE FA GC 170 wireless KIT *	Set consisting of: 1 piece GC 171 wireless module for the wireless extension of GEZE hold-open systems and 2 pieces GC 172 wireless ceiling-mounted smoke detectors	195524

RSZ 7 *

Extendable smoke switch control unit for all GEZE hold-open devices

Designation	Description	Ident-No.	Colour	Supply voltage
RSZ 7 smoke switch control unit *	Smoke switch control unit for all GEZE hold-open devices	185231	according to RAL	230 V
RSZ 7 smoke switch control unit *	Smoke switch control unit for all GEZE hold-open devices	184196	Stainless steel optic	230 V
RSZ 7 smoke switch control unit *	Smoke switch control unit for all GEZE hold-open devices	181025	silver-coloured	230 V
RSZ 7 smoke switch control unit *	Smoke switch control unit for all GEZE hold-open devices	184195	white RAL 9016	230 V

GC 172

Wireless smoke detector for wireless connection to the GC 171 wireless module



Designation	Description	Ident-No.	Supply voltage	Dimensions	Type of installation
GC 172 wireless smoke detector	for the wireless connection to GEZE hold-open systems, battery-operated with 8 years battery lifetime, with base, tested in accordance with EN 54-7 and EN 54-25, general construction technique permit for use with all GEZE hold-open systems	195522	3 V DC	110 x 110 x 70 mm	Ceiling

GC 173

Wireless thermal detector for wireless connection to the GC 171 wireless module



Designation	Description	Ident-No.	Supply voltage	Dimensions	Type of installation
GC 173 wireless thermal detector	for the wireless connection to GEZE hold-open systems, battery-operated with 8 years battery lifetime, with base, tested in accordance with EN 54-7 and EN 54-25, general construction technique permit for use with all GEZE hold-open systems	195523	3 V DC	110 x 110 x 70 mm	Ceiling

INSTALLATION MATERIAL**SPINDLE EXTENSION**

For TS 4000/TS 2001



Designation	Description	Ident-No.	Colour	Spindle extension
Spindle extension for TS 4000 / TS 2000	Crown gearing	103678	black	15 mm
Spindle extension for TS 4000 / TS 2000	Crown gearing	103550	Galvanised	20 mm
Spindle extension for TS 4000 / TS 2000	Crown gearing	103679	black	20 mm
Spindle extension for TS 4000 / TS 2000	Crown gearing	139793	according to RAL	15 mm
Spindle extension for TS 4000 / TS 2000	Crown gearing	103548	Galvanised	10 mm
Spindle extension for TS 4000 / TS 2000	Crown gearing	103677	black	10 mm
Spindle extension for TS 4000 / TS 2000	Crown gearing	103549	Galvanised	15 mm

DRILLING TEMPLATE DOOR CLOSER

for TS 5000/TS 4000/TS 3000/TS 2000



Designation	Description	Ident-No.
Drilling template door closer	for TS 5000/TS 4000/TS 3000/TS 2000	053134

MOUNTING PLATE LINK ARM *

for TS 4000/TS 2000, with slim frames



Designation	Description	Ident-No.	Colour
Mounting plate link arm	for TS 4000/TS 2000, with slim frames	082506	according to RAL
Mounting plate link arm	for TS 4000/TS 2000, with slim frames	057109	silver-coloured

MOUNTING PLATE DOOR CLOSER

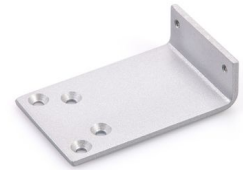
for TS 5000 EFS / RFS / E-HY / TS 4000 E with hole pattern according to DIN EN 1154 Supplement 1



Designation	Description	Ident-No.	Colour
Mounting plate door closer	for TS 5000 EFS / RFS / E-HY / TS 4000 E with hole pattern according to DIN EN 1154 Supplement 1	059107	silver-coloured
Mounting plate door closer	for TS 5000 EFS / RFS / E-HY / TS 4000 E with hole pattern according to DIN EN 1154 Supplement 1	100044	according to RAL

MOUNTING PLATE LINK ARM

For TS 4000/TS 2000 for parallel arm installation



Designation	Description	Ident-No.	Colour
Mounting plate link arm	for TS 4000/TS 2000, for parallel arm installation	053319	dark bronze
Mounting plate link arm	for TS 4000/TS 2000, for parallel arm installation	027460	according to RAL
Mounting plate link arm	for TS 4000/TS 2000, for parallel arm installation	053318	silver-coloured

* The products designated above may vary in form, type, characteristics, function, or availability depending on the country. Please get in touch with your GEZE contact person if you have any questions.